



# WYATT® VORMAX® ELONGATED TOILET



**D2220AA121.415** - Left-Hand Trip Lever  
**D2220AA122.415** - Right-Hand Trip Lever

## FEATURES

- Includes VorMax® Flushing Technology to help maintain a tidy bowl
- High efficiency (4.8 Lpf/1.28 gpf) toilet
- Meets EPA WaterSense® criteria
- 2-1/16" fully glazed trapway
- Comfortable 16-1/2" rim height for ADA accessible applications
- CleanCurve® Rim Design eliminates hidden, hard to reach surfaces where dirt and build-up hide
- 1-3/4" Dual Injection Flush Valves for optimal bowl rinsing
- EverClean® surface
- Polypropylene plastic slow-close easy lift-off seat included

## DIMENSIONS

### NOMINAL DIMENSIONS

30-3/16" x 17-5/8" x 30-3/4" (767 x 448 x 781 mm)

### WATER SPOT

8" (203 mm) wide  
9" (229 mm) length  
5-13/16" (148 mm) height

## COLORS/FINISHES

Canvas White (415), Brushed Nickel (2950A),  
Polished Nickel (0080A)

## COMPONENTS

**D23363A104.415** Elongated Bowl  
**D24370A121.415** Tank - Left-Hand Trip Lever  
**D24370A122.415** Tank - Right-Hand Trip Lever  
**735220-400.415** Tank Cover  
**5024A15G.415** Transitional Elongated Toilet Seat  
**7381331-200.2950A** Plated Trip Lever (optional component)  
Brushed Nickel  
**7381331-200.0080A** Plated Trip Lever (optional component)  
Polished Nickel

## COMPLIANCE CERTIFICATIONS

Meets or Exceeds ASME A112.19.2/CSA B45.1

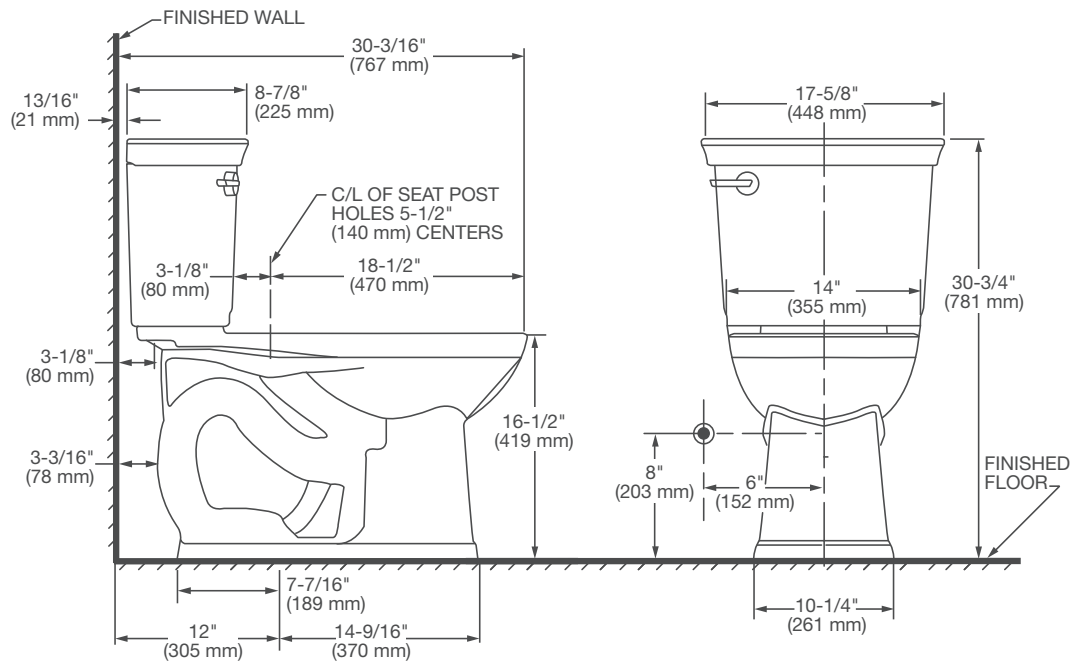


Meets the Americans with Disabilities Act Guidelines  
and ANSI A117.1 Requirements for Accessible and  
Usable Building Facilities-Check Local Codes.

ROUGH IN DIAGRAM SHOWN  
ON NEXT PAGE



# WYATT® VORMAX® ELONGATED TOILET



## NOTES:

This toilet is designed to rough-in at a minimum dimension of 12" (305 mm) from finished wall to C/L of outlet.  
Supply not included with fixture and must be ordered separately.  
Dimensions shown for location of supply is suggested.

## IMPORTANT:

Dimensions of fixtures are nominal and may vary within the range of tolerance established by ANSI Standard A112.19.2.  
These measurements are subject to change or cancellation. No responsibility is assumed for use of superseded or voided pages.

PART OF LIXIL